



Media Release

August 10, 2024

For immediate release

9:00 am PST

Portion of Evacuation Order downgraded to an Evacuation Alert for the Komonko Creek wildfire

Nelson, BC: On the recommendation of the BC Wildfire Service (BCWS), the Regional District of Central Kootenay (RDCK) Emergency Operations Centre (EOC) has downgraded the Evacuation Order for 81 properties and 25 Parcel Identifiers (PIDs) in Electoral Area H to an Evacuation Alert due to the Komonko Creek wildfire (formerly known as the Aylwin Creek Wildfire), part of the Slocan Lake Complex. The area includes properties from the southern entrance to Red Mountain Road to the Village of Silverton. Highway 6 remains closed between the south entrance to Red Mountain Road and the Lemon Creek Bridge. See a map of the Evacuation Alert area below.

69 properties still remain on Evacuation Order as a result of the Aylwin Creek wildfire (now known as the Komonko Creek Wildfire).

ADDRESSES NOW ON EVACUATION ALERT (81):

8550 CEDAR DR	8018 LWR GALENA FARM RD	8102 RED MOUNTAIN RD
8560 CEDAR DR	8021 LWR GALENA FARM RD	8112 RED MOUNTAIN RD
7912 HIGHWAY 6	8171 OMA RD	8141 RED MOUNTAIN RD
7914 HIGHWAY 6	8177 OMA RD	8150 RED MOUNTAIN RD
7916 HIGHWAY 6	8180 OMA RD	8157 RED MOUNTAIN RD
7918 HIGHWAY 6	8186 OMA RD	8164 RED MOUNTAIN RD
7923 HIGHWAY 6	8195 OMA RD	8165 RED MOUNTAIN RD
8150 HIGHWAY 6	8196 OMA RD	8173 RED MOUNTAIN RD
8651 HIGHWAY 6	8019 RED MOUNTAIN RD	8201 RED MOUNTAIN RD
8656 HIGHWAY 6	8020 RED MOUNTAIN RD	8230 RED MOUNTAIN RD
8670 HIGHWAY 6	8046 RED MOUNTAIN RD	8235 RED MOUNTAIN RD
8010 LWR GALENA FARM RD	8070 RED MOUNTAIN RD	8237 RED MOUNTAIN RD
8012 LWR GALENA FARM RD	8088 RED MOUNTAIN RD	8241 RED MOUNTAIN RD
8014 LWR GALENA FARM RD	8095 RED MOUNTAIN RD	8250 RED MOUNTAIN RD
8016 LWR GALENA FARM RD	8099 RED MOUNTAIN RD	8277 RED MOUNTAIN RD

8296 RED MOUNTAIN RD	8446 RED MOUNTAIN RD	8527 RED MOUNTAIN RD
8297 RED MOUNTAIN RD	8449 RED MOUNTAIN RD	8530 RED MOUNTAIN RD
8310 RED MOUNTAIN RD	8465 RED MOUNTAIN RD	8545 RED MOUNTAIN RD
8321 RED MOUNTAIN RD	8470 RED MOUNTAIN RD	8559 RED MOUNTAIN RD
8370 RED MOUNTAIN RD	8473 RED MOUNTAIN RD	8576 RED MOUNTAIN RD
8383 RED MOUNTAIN RD	8479 RED MOUNTAIN RD	8580 RED MOUNTAIN RD
8391 RED MOUNTAIN RD	8494 RED MOUNTAIN RD	8590 RED MOUNTAIN RD
8407 RED MOUNTAIN RD	8497 RED MOUNTAIN RD	8595 RED MOUNTAIN RD
8413 RED MOUNTAIN RD	8503 RED MOUNTAIN RD	8596 RED MOUNTAIN RD
8418 RED MOUNTAIN RD	8521 RED MOUNTAIN RD	8067 UPPER GALENA FARM RD
8425 RED MOUNTAIN RD	8522 RED MOUNTAIN RD	8075 UPPER GALENA FARM RD
8428 RED MOUNTAIN RD	8526 RED MOUNTAIN RD	8085 UPPER GALENA FARM RD

PIDs NOW ON EVACUATION ALERT (25):

011-057-505	016-813-499	016-626-125
029-528-861	016-614-682	015-440-559
010-350-420	009-644-326	030-187-851
024-694-886	030-187-877	016-718-267
016-616-065	009-994-947	026-566-397
010-909-575	016-366-930	009-803-653
016-718-232	010-568-051	016-366-948
016-616-235	026-566-371	
016-615-981	009-834-443	

Residents that have been downgraded to an Evacuation Alert are advised there may be unseen dangers when returning to their homes and properties. The RDCK advises all residents to read through the information in this [re-entry document](#) on what to do when you return home after a wildfire. For those residents returning to their homes today (Saturday, August 10), RDCK Emergency Operations staff will be on site at the north end of Red Mountain Road to provide support to returning evacuees including important re-entry information and garbage bags for disposal of spoiled fridge and freezer contents.

The RDCK will be offering free collection service for spoiled food and damaged refrigeration units for the Red Mountain Road Evacuation Order residents. Pick up times are Saturday, August 10 at 3:00 pm and Sunday, August 11 at 10:00 am. [Read this document](#) for more information on how to remove food and prepare your fridge or freezer, as well as instruction on how to minimize wildlife attraction.

Bannock Point recreation site will remain CLOSED. Following danger tree assessment and danger tree falling it is expected to re-open on Thursday, August 15. Go to <https://www.sitesandtrailsbc.ca/> for the most up to date information.

As of August 3, the Aylwin Creek and Komonko Creek wildfires merged at Enterprise Creek and moving forward are referred under the Komonko Creek wildfire, part of the Slocan Lake Complex. The Slocan Lake Complex includes the Aylwin Creek wildfire, Komonko Creek wildfire, Mulvey Creek wildfire, Nemo Creek wildfire, and Ponderosa wildfire. A complex is created when multiple wildfires are managed by a single Incident Management Team, and resources and equipment are shared between all incidents in the complex.

The Komonko wildfire was first discovered on July 19 and the suspected cause is a lightning strike.

Updates or changes to the Evacuation Alert or Order will be provided via the [RDCK website](#), [Facebook](#), and [X](#) as more information becomes available. For details about evacuation and emergency preparedness, along with other resources, please visit www.rdck.ca/eocinfo. The RDCK EOC public inquiry line is 250.352.7701 or 1.866.522.7701 (toll free).

For up to date information on current wildfire activity, conditions and prohibitions, call 1.888.336.7378 or visit www.bcwildfire.ca.

For more information about evacuations and emergency preparedness, along with other resources:

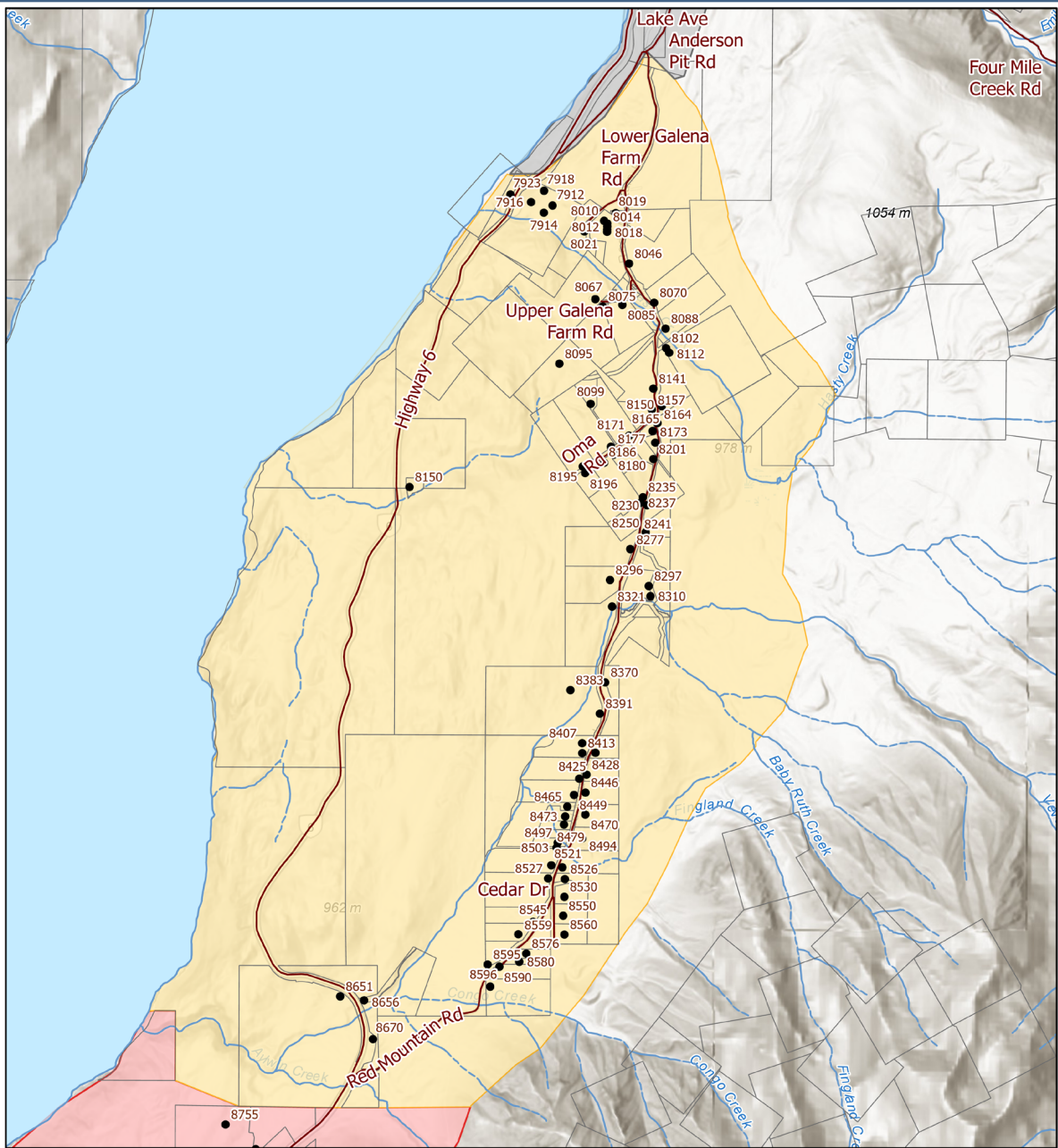
- [Current RDCK Evacuation Alerts, Orders and Rescinds](#) or call 250.352.7701
- [Sign up for RDCK Emergency Notification System to receive notifications](#)
- [RDCK web map](#)
- [Public weather alerts for BC from Environment Canada](#)
- [BC Wildfire – Interactive Map of Current Events](#)
- [Fortis BC Outage Map](#) or call 1.866.436.7847
- [BC Hydro outage map](#) or call 1.800.224.9376
- [Nelson Hydro](#) 1.877.324.9376
- [Drive BC](#) for highway closures and road conditions
- [For BC Air Quality Health Index](#)
- [Prepared BC](#)

Incorporated in 1965, the Regional District of Central Kootenay (RDCK) is a local government that serves 60,000 residents in 11 electoral areas and nine member municipalities. The RDCK provides more than 160 services, including community facilities, fire protection and emergency services, grants, planning and land use, regional parks, resource recovery and handling, transit, water services and much more. For more information about the RDCK, visit www.rdck.ca.

-30-

For media enquiries:

EOC Information Officer
Regional District of Central Kootenay
Tel: 250.352-7701
Email: eocinfo@rdck.bc.ca



**REGIONAL DISTRICT OF
CENTRAL KOOTENAY
EMERGENCY
OPERATIONS CENTRE**

EOC Phone: 250-352-7701 or 1-866-522-7701

Current Emergency Information:

rdck.ca/EOCinfo

Register to receive emergency notifications:

rdck.ca/notifications

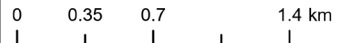
To report a flood, landslide, spill or other hazards:

1-800-663-3456

Aylwin Creek Wildfire Evacuation Order Rescind to Evacuation Alert

- Streets
- Addresses
- Legal Parcels
- Evacuation Alert
- Evacuation Order
- Evacuation Alert Rescind

Map Scale: 1:29,273



The mapping information shown are approximate representations and should only be used for reference purposes. The Regional District of Central Kootenay is not responsible for any errors or omissions on this map.